



LEI

GLOBAL
LEGAL
ENTITY
IDENTIFIER
FOUNDATION

GLEIF services in the GLEIS

21 June 2017

**Stephan Wolf, CEO GLEIF
GLEIF 2017 Conferência “Meet the Market – The
uses of LEI”, Lisbon**

GLEIF Services



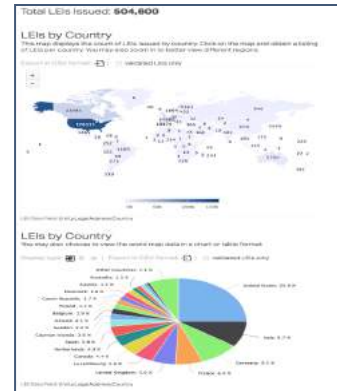
GLEIF offers a wide range of services in Global LEI System including:



Perform/Verify Accreditation



Provide Business Report



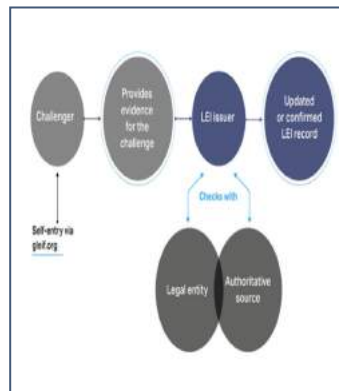
Provide Global LEI Index



Define and Monitor Data Quality



Website in G20 languages



Provide Challenge Facility



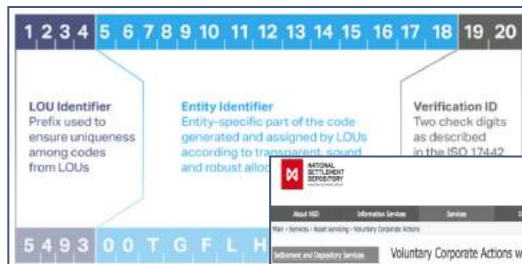
Develop technical standards



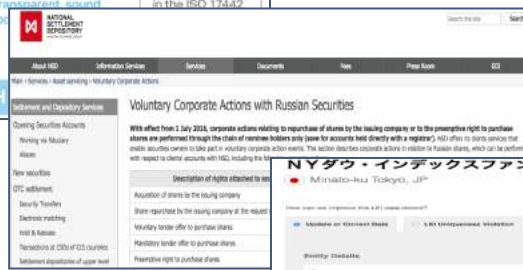
Partner Projects with Standard Organizations

LEI Issuer Services

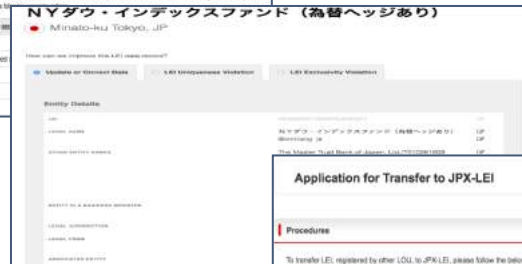
The partnering LEI Issuers offer a wide range of services in the Global LEI System including:



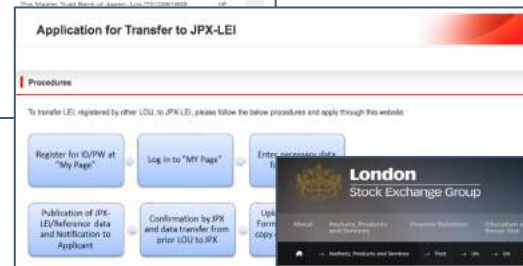
Issue New LEI



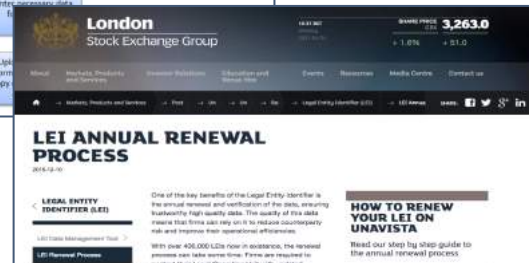
Enter Corporate Actions



Manage Challenges



Transfer of LEIs and LE-RD



Renewal of LEIs

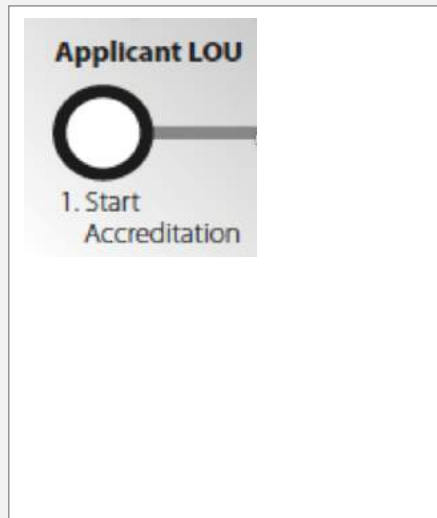
Who is who

1. Perform/Verify Accreditation



GLEIF manages a **network of partners** to provide trusted services and open, reliable data for unique legal entity identification worldwide.

- All current LEI issuers and new applicants are subject to the same GLEIF accreditation process.

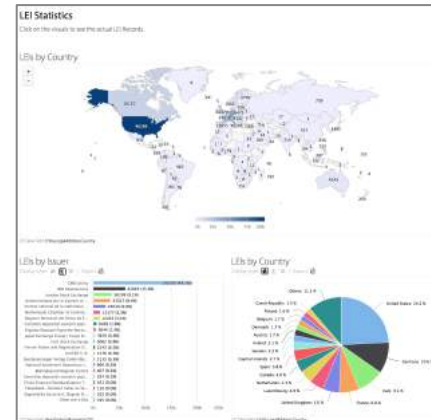


- GLEIF conducts **annual Accreditation Verification**. This is a process of re-verification of the LOU internal controls within its LEI operations.

2. Provide Global LEI Index



- The Global LEI Index is the only **free online source** that provides open, standardized and high quality legal entity reference data
- LEI Overview page with statistics
 - Number of LEIs per Country, Issuer, Registration Status, Entity Status
 - Drill down function: Visuals can be clicked, which leads to the detailed LEI data
- Compare LEI Records
 - Specific LEI records selected from search results can be compared
- Export in Excel, CSV, XML and JSON format

A screenshot of the "Comparing 3 LEI Records" interface. It displays three columns of data for different LEI records, allowing for side-by-side comparison. The records are identified by their LEI numbers and associated entities. The interface includes various fields for comparison, such as "Entity Name", "Registration Date", and "Status".



2. Provide Global LEI Index

Access high quality data on legal entities worldwide

JACONE TRADE AND INVEST. LIMITED

Road Town, Virgin Islands, British

[in Share](#) [Tweet](#)

Entity details	
LEI	253400CK0E1TR1K71Y33
LEGAL NAME	JACONE TRADE AND INVEST. LIMITED
OTHER ENTITY NAMES	JACONE TRADE AND INVEST. LTD, ДЖЕЙКОУН ТРЕЙД ЭНД ИНВЕСТ. ЛИМИТЕД
BUSINESS REGISTER	VG001
BUSINESS REGISTER ENTITY ID	1805479
LEGAL JURISDICTION	VG
LEGAL FORM	Aktsionernaya kompaniya s ogranichennoy otvetstvennost'yu
ASSOCIATED ENTITY	not available
ENTITY STATUS	ACTIVE
EXPIRATION DATE	not available
EXPIRATION REASON	not available
SUCCESSOR ENTITY	not available

Addresses	
LEGAL	HEADQUARTERS
TOTALSERVE TRUST COMPANY LIMITED, 19 Waterfront Drive P.O.Box 3540 VG1110 Road Town Virgin Islands, British	P.O. Box 51496 3505 Limassol Cyprus

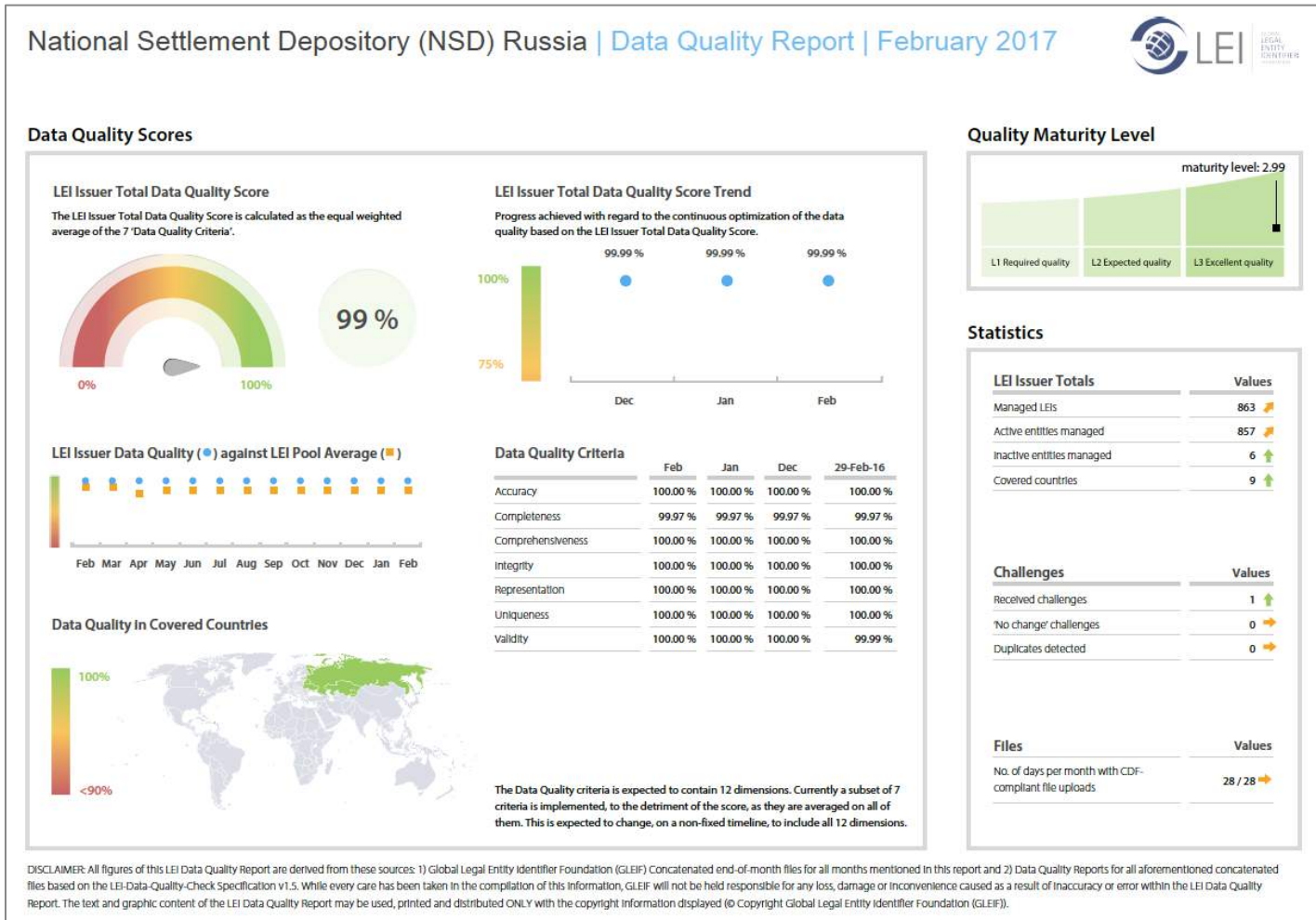
Registration details	
INITIAL REGISTRATION DATE	2015-04-15 15:13:00+03:00
LAST UPDATE DATE	2017-03-02 17:30:01.733+03:00
REGISTRATION STATUS	ISSUED
NEXT RENEWAL DATE	2018-03-02 12:29:54.59+03:00
MANAGING LOU	253400M18U5TB02TW421 National Settlement Depository (NSD), Russia
VALIDATION SOURCES	FULLY_CORROBORATED

Validation against 600 selected global registration authorities

Growing international network of LEI issuers

3. Define and Monitor Data Quality

Now available per LEI issuer




4. Provide Information on Global LEI System New Website, New Messaging



5. Provide Challenge Facility

- Challenge to LEI & LE-RD service is available via the GLEIF website since **13 July 2016**. (<https://www.gleif.org/en/lei-data/challenge-lei-data>).
- The centralized online facility is part of the GLEIF data quality management program.

Registration details	
INITIAL REGISTRATION DATE	2017-01-30 12:37:00+03:00
LAST UPDATE DATE	2017-01-30 17:30:02.45+03:00
REGISTRATION STATUS	ISSUED
NEXT RENEWAL DATE	2018-01-30 12:36:40.33+03:00
MANAGING LOU	253400M18U5TB02TW421 National Settlement Depository (NSD), Russia
VALIDATION SOURCES	FULLY_CORROBORATED

 Challenge This Record

Who owns whom

Who Owns Whom (1)

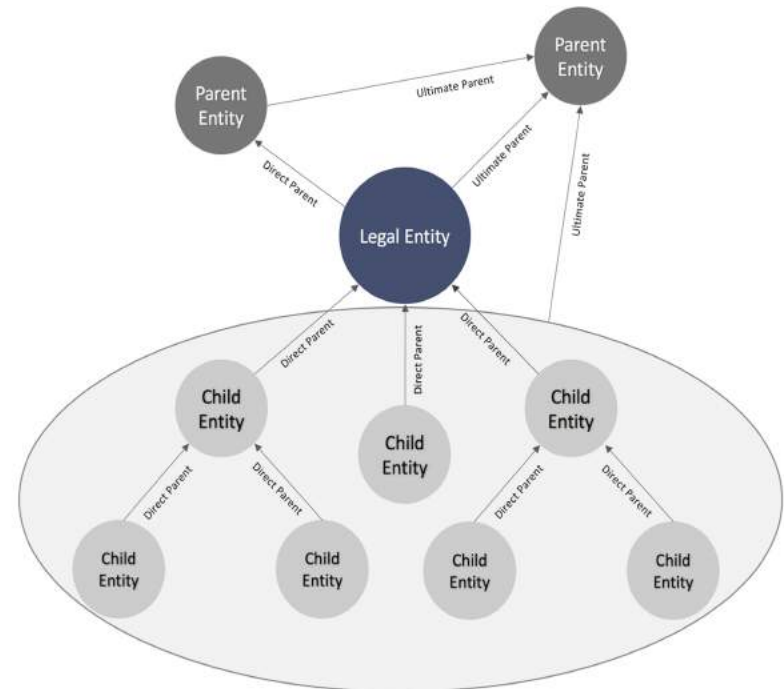
Making Direct and Ultimate parent Information Available

Starting 1 May 2017, entities that have or acquire an LEI will report

- Their ‘ultimate accounting consolidating parent’: Defined as the highest level legal entity preparing consolidated financial statements
- Their ‘direct accounting consolidating parent’: Defined as the lowest level legal entity that prepares consolidated financial statements that consolidate the entity

In both cases, identification of the parent would be based on the accounting definition of consolidation applying to this parent

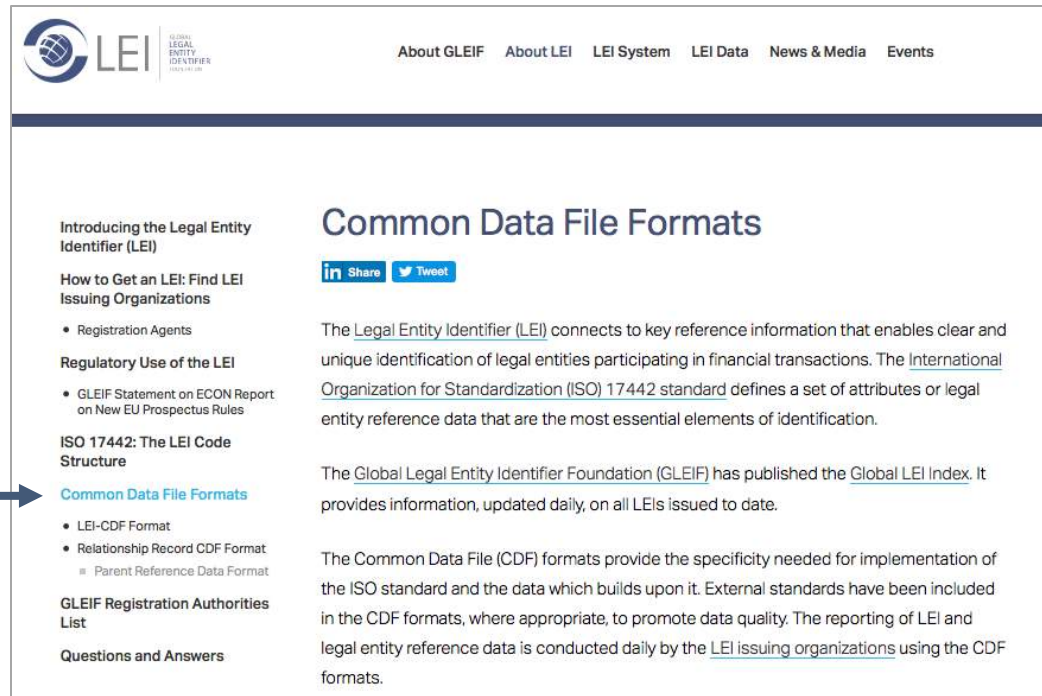
- IFRS (International Financial Reporting Standards) and
- US GAAP (United States Generally Accepted Accounting Principles)



Who Owns Whom (2)

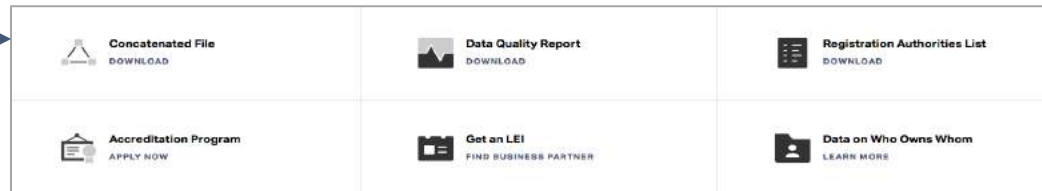
Making Direct and Ultimate parent Information Available

- Dedicated section on Level 2 Standards



The screenshot shows the LEI website interface. At the top, there is a navigation menu with links: About GLEIF, About LEI, LEI System, LEI Data, News & Media, and Events. The main content area features a sidebar on the left with a list of topics: 'Introducing the Legal Entity Identifier (LEI)', 'How to Get an LEI: Find LEI Issuing Organizations' (with sub-points for Registration Agents and Regulatory Use of the LEI), 'ISO 17442: The LEI Code Structure', 'Common Data File Formats' (with sub-points for LEI-CDF Format and Relationship Record CDF Format, including Parent Reference Data Format), 'GLEIF Registration Authorities List', and 'Questions and Answers'. The main content area is titled 'Common Data File Formats' and includes social media share buttons for LinkedIn and Twitter. Below the title, there are two paragraphs of text explaining the LEI system and the Common Data File (CDF) formats, with several hyperlinks.

- Direct links on new gleif.org start page



The screenshot shows a grid of six direct links on the new gleif.org start page. Each link includes an icon, a title, and a call to action:

- Concatenated File** (Download icon) - DOWNLOAD
- Data Quality Report** (Download icon) - DOWNLOAD
- Registration Authorities List** (Download icon) - DOWNLOAD
- Accreditation Program** (Apply icon) - APPLY NOW
- Get an LEI** (Find icon) - FIND BUSINESS PARTNER
- Data on Who Owns Whom** (Learn icon) - LEARN MORE

Who owns what

6. Partner Projects with Standard Organizations



Summer 2017

Mapping
Program



ISO BIC 9362

Summer 2017

Taxonomy



Winter 2017

Issuer



ISO ISIN 6166

Global Partner
(proposed)



Conferência “Meet the Market – The uses of LEI”



Thank you for your attention!

For more information, visit the GLEIF Website at www.gleif.org

Limitations

This presentation contains confidential and proprietary information and/or trade secrets of the Global Legal Entity Identifier Foundation (GLEIF) and/or its affiliates, and is not to be published, reproduced, copied, or disclosed without the express written consent of Global Legal Entity Identifier Foundation.

Global Legal Entity Identifier Foundation, the Global Legal Entity Identifier Foundation logo are service marks of Global Legal Entity Identifier Foundation.