



LEI

GLOBAL  
LEGAL  
ENTITY  
IDENTIFIER  
FOUNDATION

# The global mission of the GLEIS

21 June 2017

Gerard Hartsink, Chairman GLEIF Board  
GLEIF 2017 Conferência “Meet the Market – The  
uses of LEI”, Lisbon



## Who is GLEIF



## Who is GLEIF



- The GLEIF is a Swiss foundation inaugurated in June 2014 and founded by the Financial Stability Board (FSB). It is overseen by 71 global regulators in the Regulatory Oversight Committee (ROC).
- GLEIF Board has 17 independent directors and is chaired by Gerard Hartsink.



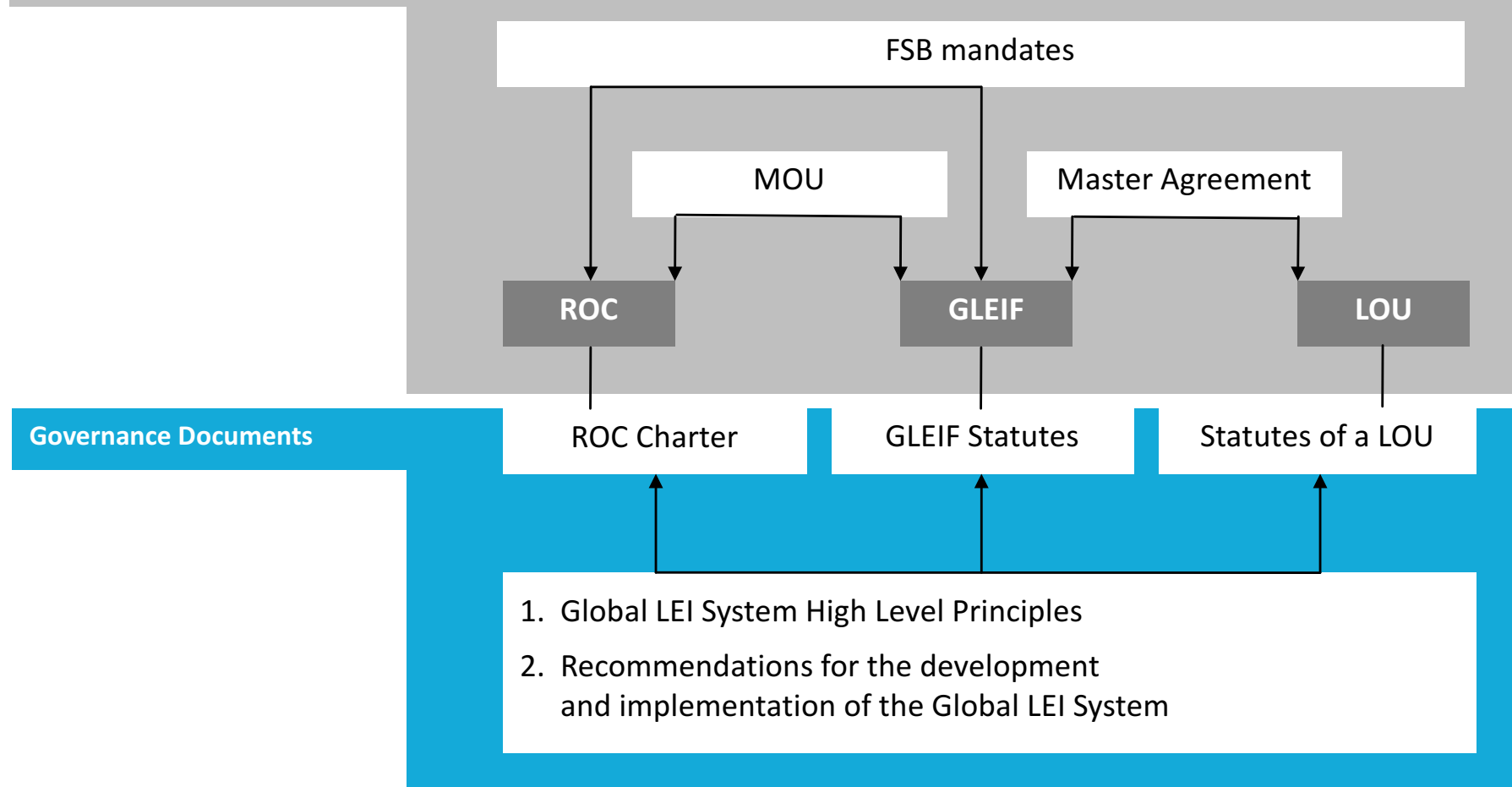
- GLEIF in Numbers:
  - Revenue 2016
  - Number of employees
  - Partners for LEI issuing (LOUs)
  - Registered LEIs (May 2017)
  - Website ([www.gleif.org](http://www.gleif.org))
  - 6,5M USD
  - 30 from 18 countries
  - 30, and growing
  - 510.000
  - 14 languages of G20



# Global LEI System relationship and governance documents



## Relationship Documents





# GLEIF Vision & Mission



## **Vision:**

Each business worldwide should have only one true identity. This identity should include a digital identity.

The LEI system shall provide identity management, by issuing LEIs for legal entities, and by providing quality assured links of LEIs into alternative identity management systems.

## **Mission:**

GLEIF manages a network of partners to provide trusted services and open, reliable data for unique legal entity identification worldwide.



## GLEIF Core Competencies



The fundamental capabilities that set us apart and enable us to uniquely serve our constituents.

- GLEIF is a recognized and trusted partner in **Identification Management** for legal entities.
- GLEIF as **Accreditation Agency** runs a leading quality management system for its network of partners.
- GLEIF supplies a defined and growing range of **value added services** to the public / private sector.





## What is the LEI



# LEI as an Identity Label



The LEI is a unique 20 digit alphanumeric code without embedded intelligence based on ISO 17442 standard assigned to legal entities

Starting in May, LEI-CDF 2 is a new reference data standard



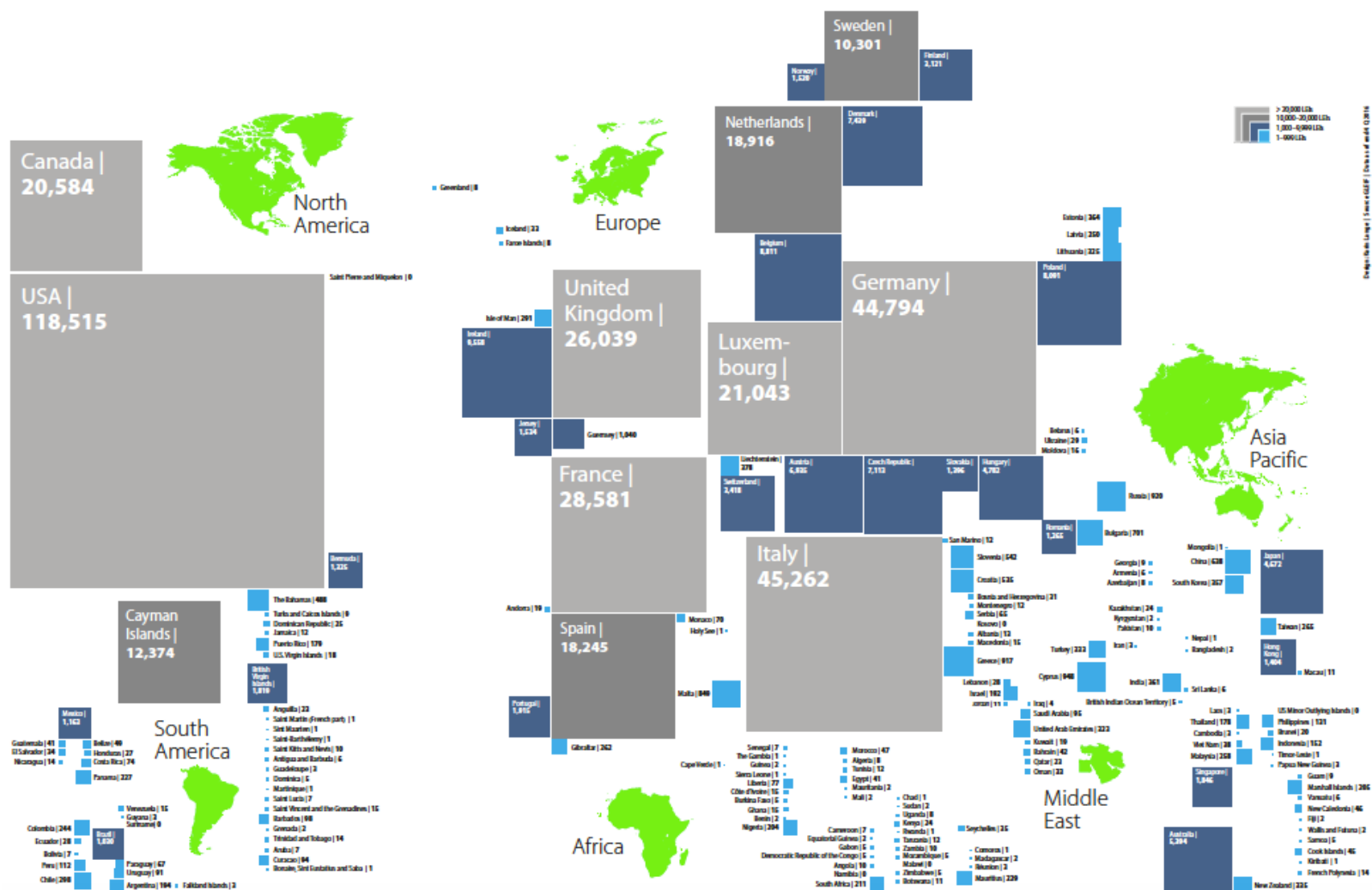
Example: ABB Sécheron S.A., Switzerland

| LEI Data                       |                                       |       |
|--------------------------------|---------------------------------------|-------|
| LEI File Header                |                                       |       |
| ContentDate                    | leiLEIDateTimeProfile                 | [1,1] |
| Originator                     | leiLEIType                            | [0,1] |
| FileContent                    | leiFileContentEnum                    | [1,1] |
| DeltaStart                     | leiLEIDateTimeProfile                 | [0,1] |
| RecordCount                    | xs:nonNegativeInteger                 | [1,1] |
| Extension                      | leiExtensionType                      | [0,1] |
| LEI Data Record                |                                       |       |
| LEI                            | leiLEIType                            | [1,1] |
| Entity                         |                                       |       |
| LegalName                      | leiNameType                           | [1,1] |
| OtherEntityNames               | leiOtherEntityNamesType               | [0,1] |
| TransliteratedOtherEntityNames | leiTransliteratedOtherEntityNamesType | [0,1] |
| LegalAddress                   | leiAddressType                        | [1,1] |
| HeadquartersAddress            | leiAddressType                        | [1,1] |
| OtherAddresses                 | leiOtherAddressesType                 | [0,1] |
| TransliteratedOtherAddresses   | leiTransliteratedOtherAddressesType   | [0,1] |
| RegistrationAuthority          | leiRegistrationAuthorityType          | [0,1] |
| LegalJurisdiction              | leiJurisdictionCodeType               | [0,1] |
| EntityCategory                 | leiEntityCategoryTypeEnum             | [0,1] |
| LegalForm                      | leiLegalFormType                      | [0,1] |
| AssociatedEntity               | leiAssociatedEntityType               | [0,1] |
| EntityStatus                   | leiEntityStatusEnum                   | [1,1] |
| EntityExpirationDate           | leiLEIDateTimeProfile                 | [0,1] |
| EntityExpirationReason         | leiEntityExpirationReasonEnum         | [0,1] |
| SuccessorEntity                | leiSuccessorEntityType                | [0,1] |
| Registration                   |                                       |       |
| InitialRegistrationDate        | leiLEIDateTimeProfile                 | [1,1] |
| LastUpdateDate                 | leiLEIDateTimeProfile                 | [1,1] |
| RegistrationStatus             | leiRegistrationStatusEnum             | [1,1] |
| NextRenewalDate                | leiLEIDateTimeProfile                 | [1,1] |
| ManagingLOU                    | leiLEIType                            | [1,1] |
| ValidationSources              | leiValidationSourcesEnum              | [0,1] |
| ValidationAuthority            | leiValidationAuthorityType            | [0,1] |
| OtherValidationAuthorities     | leiOtherValidationAuthoritiesType     | [0,1] |
| Extension                      |                                       |       |
|                                |                                       | [0,1] |



# Number of LEIs per country

## May 2017: 510.000 LEIs





## Next steps



GLEIF has the mandate to deliver the LEI as a broad public good that is made free of charge available to any user and will deliver a high quality services for:

- "Who is who"
- "Who owns whom"
- " Who owns what"



## GLEIF's Strategy for private sector





## Conferência “Meet the Market – The uses of LEI”



**Thank you for your attention!**

For more information, visit the GLEIF Website at [www.gleif.org](http://www.gleif.org)



## Limitations



This presentation contains confidential and proprietary information and/or trade secrets of the Global Legal Entity Identifier Foundation (GLEIF) and/or its affiliates, and is not to be published, reproduced, copied, or disclosed without the express written consent of Global Legal Entity Identifier Foundation.

Global Legal Entity Identifier Foundation, the Global Legal Entity Identifier Foundation logo are service marks of Global Legal Entity Identifier Foundation.