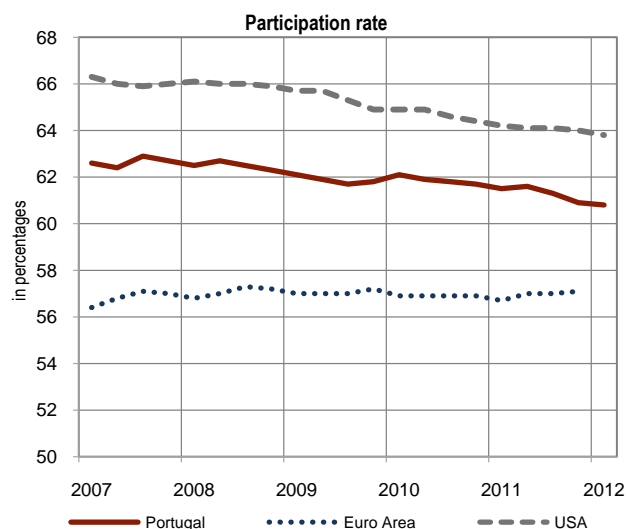
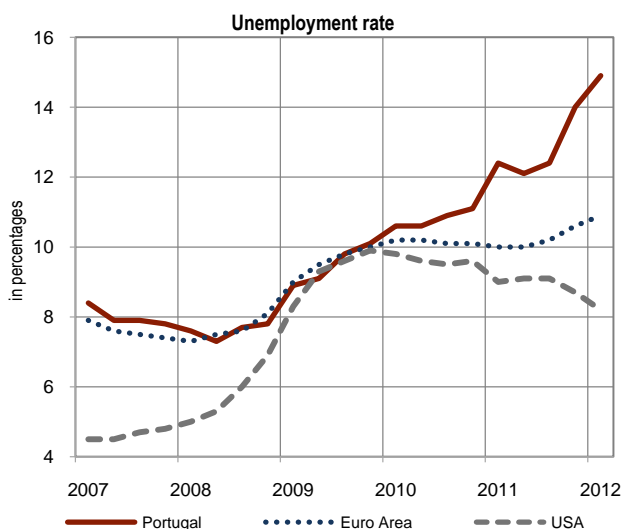
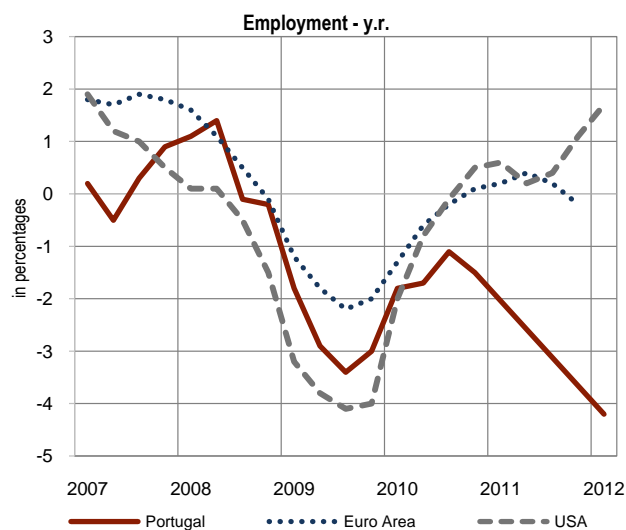


A.3 LABOUR MARKET

Source: Instituto Nacional de Estatística, Eurostat and Bureau of Labor Statistics

	Portugal ⁽¹⁾			Euro Area ⁽²⁾			USA ⁽³⁾		
	2011 Q3	2011 Q4	2012 Q1	2011 Q3	2011 Q4	2012 Q1	2011 Q3	2011 Q4	2012 Q1
	1	2	3	4	5	6	7	8	9
	(10 ³)								
1	4 854	4 735	4 663	146 705	146 372	.	139 770	140 567	141 912
2	690	771	819	16 108	16 713	17 206	13 908	13 393	12 746
3	5 543	5 507	5 482	162 813	163 085	.	153 679	153 960	154 658
	(year-on-year rate of change - y.r. - in percentages)								
4	.	.	-4.2	0.2	-0.2	.	0.4	1.1	1.7
5	.	.	18.9	1.3	5.4	9.9	-5.0	-9.0	-7.4
6	.	.	-1.3	0.3	0.4	.	-0.2	0.1	0.9
	(in percentages)								
7	12.4	14.0	14.9	10.2	10.6	10.9	9.1	8.7	8.2
8	61.3	60.9	60.8	57.0	57.1	.	64.1	64.0	63.8



(1) INE introduced a new methodology in the employment survey in the 1st quarter of 2011. Consequently, data for Portugal in the table and in the charts, starting on this period, are not comparable with the ones obtained with the previous methodology.
 (2) Euro Area: fixed composition 17 countries; seasonally adjusted by the European Central Bank.
 (3) Data refer to seasonally adjusted values and to the age group: 16 years and over.
 (4) Participation rate for the age group: 15 years and over, except USA (16 years and over).